

IBM Cognos Disclosure Management
Version 10.2.1

Samples Guide



Note

Before using this information and the product it supports, read the information in "Notices" on page 11.

Product Information

This document applies to Cognos Disclosure Management Version 10.2.1 and may also apply to subsequent releases.

Licensed Materials - Property of IBM

© **Copyright IBM Corporation 2013.**

US Government Users Restricted Rights – Use, duplication or disclosure restricted by GSA ADP Schedule Contract with IBM Corp.

Contents

Introduction	v
Chapter 1. The IBM Cognos Disclosure Management Samples	1
Chapter 2. Importing the IBM Cognos Disclosure Management Sample report	3
Importing the sample taxonomy	4
Appendix. The Sample Outdoors Company	7
The Sample Outdoors Group of Companies	7
Sample Outdoors organization and schemas	8
Notices	11

Introduction

This document is intended for use with the IBM® Cognos® Disclosure Management samples. It includes information on planning, preparing for, and installing samples, and finding and configuring the samples after installation.

The IBM® Cognos® Disclosure Management samples illustrate product features and business best practices. You can experiment with them, use their report design techniques, and use them to troubleshoot.

Where to find the samples

The samples are included with Cognos Disclosure Management on a separate disk. Contact your administrator to find out where the sample files are installed.

Finding information

To find IBM® Cognos® product documentation on the web, including all translated documentation, access one of the IBM Cognos Information Centers (<http://pic.dhe.ibm.com/infocenter/cdm/v10r2m1/index.jsp>). Release notes are published directly to Information Centers, and include links to the latest technotes and APARs.

You can also read PDF versions of the product release notes and installation guides directly from IBM Cognos product disks.

To view Cognos Disclosure Management help in the product, click **File > Help > Help**.

Accessibility features

In this release, there are no added accessibility features for samples. The material will be available in English only. However, the TM1 data source `sample_outdoors` does have language aliases for 21 languages. Accessibility features help users who have a physical disability, such as restricted mobility or limited vision, to use information technology products.

IBM Cognos HTML documentation has accessibility features. PDF documents are supplemental and, as such, include no added accessibility features.

Forward-looking statements

This documentation describes the current functionality of the product. References to items that are not currently available may be included. No implication of any future availability should be inferred. Any such references are not a commitment, promise, or legal obligation to deliver any material, code, or functionality. The development, release, and timing of features or functionality remain at the sole discretion of IBM.

Samples disclaimer

The Sample Outdoors Company, Great Outdoors Company, GO Sales, any variation of the Sample Outdoors or Great Outdoors names, and Planning Sample

depict fictitious business operations with sample data used to develop sample applications for IBM and IBM customers. These fictitious records include sample data for sales transactions, product distribution, finance, and human resources. Any resemblance to actual names, addresses, contact numbers, or transaction values is coincidental. Other sample files may contain fictional data manually or machine generated, factual data compiled from academic or public sources, or data used with permission of the copyright holder, for use as sample data to develop sample applications. Product names referenced may be the trademarks of their respective owners. Unauthorized duplication is prohibited.

Chapter 1. The IBM Cognos Disclosure Management Samples

The IBM® Cognos® Disclosure Management samples illustrate product features and technical and business best practices. You can experiment with them, use their report design techniques, and use them to troubleshoot. If you want to use the samples, install them from the Cognos Disclosure Management Samples disk or from the location where you downloaded and extracted the files.

All of the financial data required for the Cognos Disclosure Management sample reports is available in the Financefact4 cube within the sample_outdoors IBM Cognos TM1® application. If TM1 is not available, then the financial data can be found on the sample_outdoors.xls worksheet.

The samples consist of the following:

- Microsoft SQL Server 2008 R2 databases that contain the Cognos Disclosure Management, IBM® Cognos® Disclosure Management XBRL and cache restore files
- Sample TM1 cubes and the related application model
- Reports
- Sample taxonomy

Files on the Cognos Disclosure Management Samples disk

The sample set **CDM samples.zip** includes the following folders:

Important: Your login credentials are user name: Administrator and the password is !Admin321

soc 2012-12-31 sample taxonomy

Sample taxonomy files including .xsd entry point file.

sample_outdoors TM1 application

Users who have access to IBM Cognos TM1 may connect to this sample application as an OLAP data source.

Core Database

The core database consists of three separate database files:

- Samples_CDM
- Samples_CDMCache
- Samples_CDMXbrl

10-K source files

The sample_outdoors.xls file contains various source data that can be used to create Open Database Connectivity (ODBC) data sources.

10-K report security

Sample Outdoors Company (SOC) users list the various users of the sample system. The security.xls file outlines the user ID and their user group associations. The default password is Passw0rd.

10-K report objects

The report objects list the various Microsoft Excel and Word files incorporated into the Sample Outdoors Company sample 10-K report and can be used and modified as required to create other sample reports.

10-K report export file

The entire Sample Outdoors Company sample 10-K report is available for import.

10-K instance files

Instance files have been generated based on the tagged **Income Statement** and **Balance Sheet**.

10-K generated reports

The entire Sample Outdoors Company sample 10-K report has been generated so that the finished report can be viewed in its entirety.

Two reports within the Sample 10-K report have been tagged using the Sample Outdoors Taxonomy. These include the following:

- The Income Statement (Role 15100 - Statement of Operations - Statement of Income, Including Gross Margin [Table])
- The Balance Sheet (Role 10100 - Statement of Financial Position- Statement of Financial Condition, Classified [Table])

Chapter 2. Importing the IBM Cognos Disclosure Management Sample report

The IBM® Cognos® Disclosure Management samples illustrate product features and technical and business best practices. You can experiment with them, use their report design techniques, and use them to troubleshoot.

Before you begin

Before you can use the sample report, Cognos Disclosure Management must be installed, configured, and running. Save the samples on your local computer from the Cognos Disclosure Management Samples disk or from the location where you downloaded and extracted the files.

Before you import the sample report, prepare the following information:

- You must know the master encryption password. The password is Passw0rd.
- You must know which report group will contain the imported report.
- You might need to specify how to associate user taxonomies with projects.
 - If there is one user taxonomy with the required entry point URI, the import process automatically associates the taxonomy with the appropriate project.
 - If there is more than one user taxonomy with the required entry point URI, you must specify which project to use.
 - If there is no user taxonomy with the required entry point URI, you must manually import the taxonomy first. For more information, see the topics on adding taxonomies in the *IBM Cognos Disclosure Management XBRL Administration Guide*.
- You must be prepared to resolve conflicts with XBRL aspects. Some aspects might have names that conflict with existing aspects. For each conflicting aspect name, you must select one of the following options:
 - Replace the aspect being imported with the existing aspect. Any items that reference the aspect that is being imported will now reference the existing aspect.
 - Rename the aspect that you are importing.

Procedure

1. Click the **Home** tab and, in the Navigation pane, click **Administration**.
2. Double-click **Reports**.
3. Click **Import**.
4. Navigate to the location where you saved the **Sample Outdoors Company 10K report.cdm** file. This is the **10-K report export file** that is included on the Samples disk.
5. Complete the remaining steps in the **Import Reports** wizard.

Results

When the import process is complete, a summary provides the following information:

- Number of reports imported

- Number of report objects imported
- Number of projects imported
- Number of taxonomies imported
- A list of the imported data sources that you might need to fix later

What to do next

After you have imported the report, you must ensure that your users are assigned relevant permissions to view the report. You will also need to assign workflow to the objects so that the users with access to the report are able to edit the objects given their workflow access rights.

Importing the sample taxonomy

You can import the sample taxonomy into IBM® Cognos® Disclosure Management.

About this task

After a taxonomy is imported, you create or associate a project that includes the taxonomy and a report. You can then use the project to tag the report using the associated taxonomy.

Procedure

1. Click the **Home** tab and, in the Navigation pane, click **Administration**.
2. Under **XBRL**, double-click **Taxonomies**.
3. Click **Add > Taxonomy From File**.
4. In the Add a taxonomy window, specify a name for the taxonomy.
5. Optional: Specify a description for the taxonomy.
6. Click **Add**.
7. Browse to the location of the taxonomy files, and select all of the files that are related to the soc 2-12-12-31 sample taxonomy. Then click **Open**. Cognos Disclosure Management XBRL selects an XSD file as the entry point for the taxonomy, indicated by a check mark in the **Flags** column.
8. If needed, select the entry point file in the list and click **Set Entry Point**.

Important: At least one file must be an XBRL entry point file.
9. Optional: If you want to validate the taxonomy files against EDGAR Filer Manual rules, select the **EFM (EDGAR Filer Manual)** check box. The taxonomy is automatically validated against the XBRL 2.1 and Dimensions specifications.
10. Optional: If you want to edit this taxonomy, select the **Make Editable** check box. Taxonomy editing is described fully in IBM Cognos Disclosure Management Extension Taxonomy Editor User Guide.
11. Click **OK**.

What to do next

When you import the sample taxonomy into IBM® Cognos® Disclosure Management Extension Taxonomy Editor you must validate it. Two known errors and two known warnings will occur. To resolve them, perform the following steps:

- Right-click the duplicate member error and click **Remove all duplicate document inclusions**.

- Right-click the Calculation Abstract error and click **Delete all unused instances of element.**
- For the [**IncomeStatement**] warning, tag role 15100 as the Income Statement
- For the [**BalanceSheet**] warning, tag role 10100 as the Balance Sheet

Appendix. The Sample Outdoors Company

The Sample Outdoors Company samples illustrate product features and technical and business best practices.

You can also use them for experimenting with and sharing report design techniques and for troubleshooting. As you use the samples, you can connect to features in the product.

For examples related to different kinds of businesses, see the product blueprints on the IBM Cognos Information Centers (<http://pic.dhe.ibm.com/infocenter/cogic/v1r0m0/index.jsp>).

The Sample Outdoors Company, or GO Sales, or any variation of the Sample Outdoors name, is the name of a fictitious business operation whose sample data is used to develop sample applications for IBM and IBM customers. Its fictitious records include sample data for sales transactions, product distribution, finance, and human resources. Any resemblance to actual names, addresses, contact numbers, or transaction values, is coincidental. Unauthorized duplication is prohibited.

The Sample Outdoors Group of Companies

It is important to learn about the Sample Outdoors Group of Companies to quickly design your examples.

Revenue for The Sample Outdoors Company comes from corporate stores and from franchise operations. The revenues are consolidated from the wholly-owned subsidiaries. There are six distinct organizations, each with its own departments and sales branches. Five of these are regionally-based companies.

The sixth company, GO Accessories:

- Has its own collection of products, differentiated from the other GO companies by brand, name, price, color and size.
- Sells from a single branch to all regions and retailers.
- Functions both as an operating company based in Geneva, and as a part owner of the three GO subsidiaries in Europe.

The diagram illustrates the consolidated corporate structure, including the percentage changes in ownership for GO Central Europe, and shows the reporting currency and GL prefix for each subsidiary.

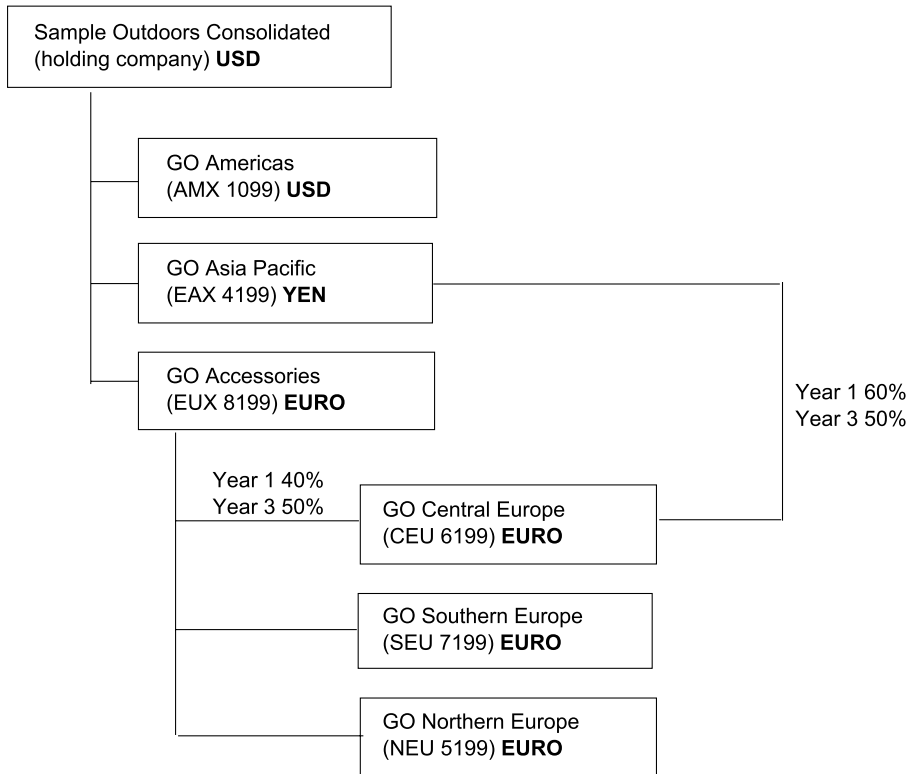


Figure 1. Consolidated corporate structure

Most of the accounts, such as those under non-personnel expenses, are at the department level, and contain only summary amounts. For example, although each marketing department has expenses, the cost is unspecified at the transaction level where marketing promotions occur.

Sample Outdoors organization and schemas

Under the holding company GO Consolidated, there are six distinct sales organizations, each with their own departments and sales branches. The diagram below illustrates the consolidated corporate structure.

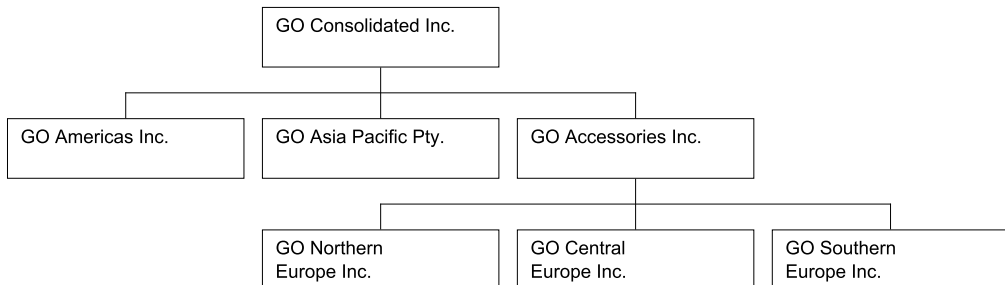


Figure 2. GO Organization

The Outdoors Companies

Five of the six companies are regionally-based companies, whose sales region is identified in the company name. These five companies sell the complete line of outdoor products including:

- Camping Equipment
- Golf Equipment
- Mountaineering Equipment
- Personal Accessories
- Outdoor Protection

The Accessory Company

Go Accessories Inc. operates differently than the five outdoor companies and stands apart in several other areas:

- GO Accessories has its own collection of accessories, differentiated from the outdoor companies by brand, name, price, color and size.
- GO Accessories sells from a single branch to all regions and retailers.
- GO Accessories functions both as an operating company based in Geneva, and as owner or part owner of three GO subsidiaries in Europe. This offers a complex structure that is useful in samples that show office-of-finance type reporting.

Unbalanced hierarchy

The ownership by GO Accessories of the European companies supports applications designed for office-of-finance reporting. Samples applications can include inter-company eliminations and consolidation up to the top node - GO Consolidated. In this structure, aggregations of the European organizations occur through GO Accessories.

GO Departments

The Sample Outdoors companies are divided into operating and corporate departments. Each organization has the same structure.

Applications for financial and planning data use the department structure in the sample budgets and forecasts.

Sales branches under operations, and HR departments under corporate, are the richest sources of data for querying and analysis.

Table 1. Sample Outdoors Departments

Division (GL)	Department (GL)
Corporate	Sales (Corporate)
Corporate	Marketing (1750)
Corporate	IS&T
Corporate	Human Resources
Corporate	Finance
Corporate	Procurement
Operations	Sales branches
Operations	Production and Distribution
Operations	Customer Service

Notices

This information was developed for products and services offered worldwide.

IBM may not offer the products, services, or features discussed in this document in other countries. Consult your local IBM representative for information on the products and services currently available in your area. Any reference to an IBM product, program, or service is not intended to state or imply that only that IBM product, program, or service may be used. Any functionally equivalent product, program, or service that does not infringe any IBM intellectual property right may be used instead. However, it is the user's responsibility to evaluate and verify the operation of any non-IBM product, program, or service. This document may describe products, services, or features that are not included in the Program or license entitlement that you have purchased.

IBM may have patents or pending patent applications covering subject matter described in this document. The furnishing of this document does not grant you any license to these patents. You can send license inquiries, in writing, to:

IBM Director of Licensing
IBM Corporation
North Castle Drive
Armonk, NY 10504-1785
U.S.A.

For license inquiries regarding double-byte (DBCS) information, contact the IBM Intellectual Property Department in your country or send inquiries, in writing, to:

Intellectual Property Licensing
Legal and Intellectual Property Law
IBM Japan Ltd.
19-21, Nihonbashi-Hakozakicho, Chuo-ku
Tokyo 103-8510, Japan

The following paragraph does not apply to the United Kingdom or any other country where such provisions are inconsistent with local law: INTERNATIONAL BUSINESS MACHINES CORPORATION PROVIDES THIS PUBLICATION "AS IS" WITHOUT WARRANTY OF ANY KIND, EITHER EXPRESS OR IMPLIED, INCLUDING, BUT NOT LIMITED TO, THE IMPLIED WARRANTIES OF NON-INFRINGEMENT, MERCHANTABILITY OR FITNESS FOR A PARTICULAR PURPOSE. Some states do not allow disclaimer of express or implied warranties in certain transactions, therefore, this statement may not apply to you.

This information could include technical inaccuracies or typographical errors. Changes are periodically made to the information herein; these changes will be incorporated in new editions of the publication. IBM may make improvements and/or changes in the product(s) and/or the program(s) described in this publication at any time without notice.

Any references in this information to non-IBM Web sites are provided for convenience only and do not in any manner serve as an endorsement of those Web sites. The materials at those Web sites are not part of the materials for this IBM product and use of those Web sites is at your own risk.

IBM may use or distribute any of the information you supply in any way it believes appropriate without incurring any obligation to you.

Licensees of this program who wish to have information about it for the purpose of enabling: (i) the exchange of information between independently created programs and other programs (including this one) and (ii) the mutual use of the information which has been exchanged, should contact:

IBM Software Group
Attention: Licensing
3755 Riverside Dr
Ottawa, ON K1V 1B7
Canada

Such information may be available, subject to appropriate terms and conditions, including in some cases, payment of a fee.

The licensed program described in this document and all licensed material available for it are provided by IBM under terms of the IBM Customer Agreement, IBM International Program License Agreement or any equivalent agreement between us.

Any performance data contained herein was determined in a controlled environment. Therefore, the results obtained in other operating environments may vary significantly. Some measurements may have been made on development-level systems and there is no guarantee that these measurements will be the same on generally available systems. Furthermore, some measurements may have been estimated through extrapolation. Actual results may vary. Users of this document should verify the applicable data for their specific environment.

Information concerning non-IBM products was obtained from the suppliers of those products, their published announcements or other publicly available sources. IBM has not tested those products and cannot confirm the accuracy of performance, compatibility or any other claims related to non-IBM products. Questions on the capabilities of non-IBM products should be addressed to the suppliers of those products.

All statements regarding IBM's future direction or intent are subject to change or withdrawal without notice, and represent goals and objectives only.

This information contains examples of data and reports used in daily business operations. To illustrate them as completely as possible, the examples include the names of individuals, companies, brands, and products. All of these names are fictitious and any similarity to the names and addresses used by an actual business enterprise is entirely coincidental.

If you are viewing this information softcopy, the photographs and color illustrations may not appear.

Trademarks

IBM, the IBM logo and ibm.com are trademarks or registered trademarks of International Business Machines Corp., registered in many jurisdictions worldwide. Other product and service names might be trademarks of IBM or other companies. A current list of IBM trademarks is available on the Web at “ Copyright and trademark information ” at www.ibm.com/legal/copytrade.shtml.

The following terms are trademarks or registered trademarks of other companies:

- Adobe, the Adobe logo, PostScript, and the PostScript logo are either registered trademarks or trademarks of Adobe Systems Incorporated in the United States, and/or other countries.
- Microsoft, Windows, Windows NT, and the Windows logo are trademarks of Microsoft Corporation in the United States, other countries, or both.

Microsoft product screen shot(s) used with permission from Microsoft.